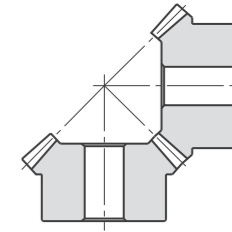
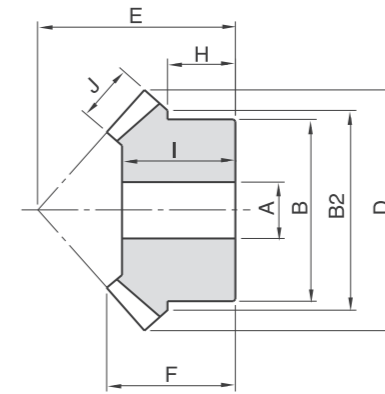


齒數比 1:1

壓力角:  $\alpha 20^\circ$   
材質: S45C



齒數比 1:1

壓力角:  $\alpha 20^\circ$   
材質: S45C

模數	齒數	孔徑	轂輪徑	B2	外徑	距離	總長	轂輪長	孔長	齒寬
		A	B	B2	D	E	F	H	I	J
M1	18	6	16	-	19.41	18.37	13	8	11	4.5
M1	20	6	18	-	21.41	20.00	14	9	12.0	5.0
M1	24	6	22	-	25.41	22.63	15	9	13.0	5.5
M1	25	6	23	-	26.41	23.79	16	10	14.0	6.0
M1	30	6	28	-	31.41	26.91	17	10	15.0	6.5
M1.5	15	8	19	-	24.62	21.05	15	8	13.0	6.5
M1.5	18	8	23	-	29.12	25.23	18	9	16.0	8
M1.5	20	8	26	-	32.12	28.68	20	11	17.5	8
M1.5	24	10	30	-	38.12	32.28	22	11	19.5	10
M1.5	25	10	32	-	39.62	34.02	23	12	20.0	10
M1.5	30	12	39	-	47.12	40.35	27	14	24.0	12
M2	15	8	25	-	32.83	27.82	20	10	17.0	9
M2	16	8	27	-	34.83	31.09	19	11	18.0	7
M2	18	10	31	-	38.83	32.07	22	12	19.0	10
M2	20	10	34	36	42.83	36.36	25	14	22.0	11
M2	24	12	39	42	50.83	42.44	28.5	15	25.0	13
M2	25	12	43	-	52.83	45.41	30.5	16	27.0	13
M2	30	12	50	53	62.83	51.98	33.5	18	30.0	15
M2.5	12	10	24	25	33.54	33.00	26	15	23.0	10
M2.5	15	10	30	32	41.04	37.30	28	15	25.0	12
M2.5	16	12	32	34.07	43.54	38.50	27.55	15.5	25.22	12
M2.5	18	12	36	38	48.04	41.91	29	15	26.0	12
M2.5	20	12	41	44	53.54	44.69	30	16	26.0	13
M2.5	24	15	48	53	63.54	52.25	34	18	30.0	15
M2.5	25	15	52	55	66.04	53.81	35	18	30.0	16
M2.5	30	15	63	66	78.54	63.60	40	21	36.0	18

模數	齒數	孔徑	轂輪徑	B2	外徑	距離	總長	轂輪長	孔長	齒寬
		A	B	B2	D	E	F	H	I	J
M3	12	12	30	-	40.24	36.39	28	14	24.0	12
M3	15	12	36	38	49.24	42.05	30	15	26.0	13
M3	18	12	45	47	58.24	47.11	32	15	28.0	15
M3	20	12	50	52	64.24	55.02	37	20	33.0	15
M3	24	15	60	62	76.24	65.57	43	24	38.0	17
M3	25	15	62	65	79.24	69.04	45	26	40.0	17
M3	30	19	74	80	94.24	73.73	45	23	40.0	21
M3.5	20	15	58	60	74.95	60.70	40	20	35.0	18
M3.5	24	20	70	74	88.95	68.22	42	20	37.0	20
M3.5	25	20	72	76	92.45	71.27	44	20	38.0	21
M3.5	30	20	90	94	109.95	81.51	49	23	43.0	26
M4	15	15	50	52	65.66	52.64	36	15	31.0	18
M4	18	15	60	62	77.66	60.79	40	18	34.0	19
M4	20	18	68	70	85.66	69.03	45	23	39.0	20
M4	24	19	78	80	101.66	79.20	48	22	41.0	21
M4	25	19	80	84	105.66	82.50	50	23	43.0	22
M4	30	25	100	104	125.66	95.33	55	26	48.0	25
M5	15	20	58	61	82.07	64.87	45	18	39.0	22
M5	18	20	72	75	97.07	72.83	47	18	40.0	24
M5	20	20	82	85	107.07	82.04	52	23	44.0	25
M5	24	22	102	105	127.07	93.83	54	25	46.0	25
M5	25	25	108	110	132.07	96.62	55	26	47.0	26
M5	30	25	132	135	157.07	112.60	60	29	52.0	28
M6	20	20	90	100	128.48	98.04	62	26	53.0	30
M6	25	25	110	125	158.48	112.74	62	25	53.0	30
M7	20	25	120	125	149.90	112.08	72	35	66.0	38